



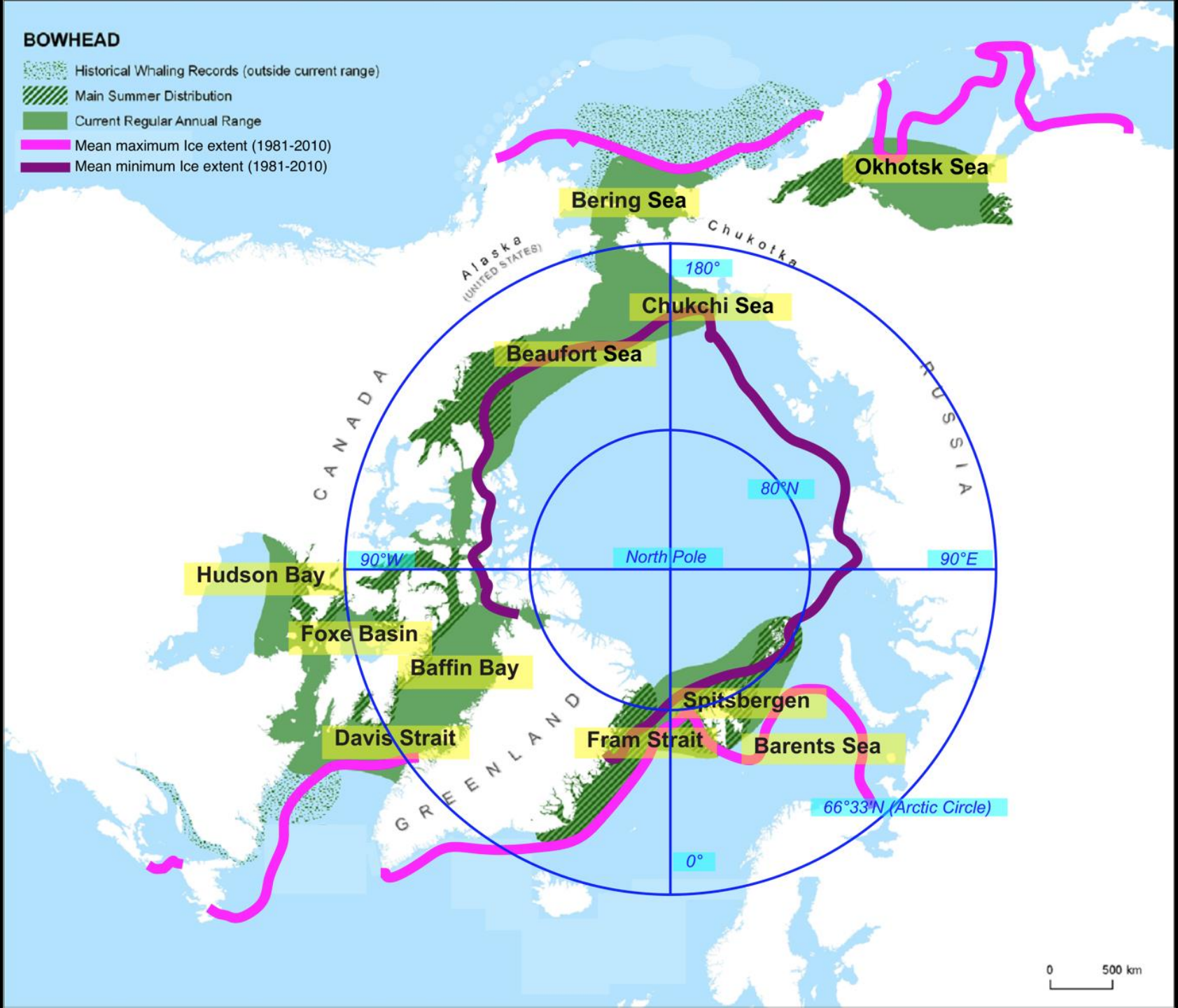
Presentie en © Herman Sips

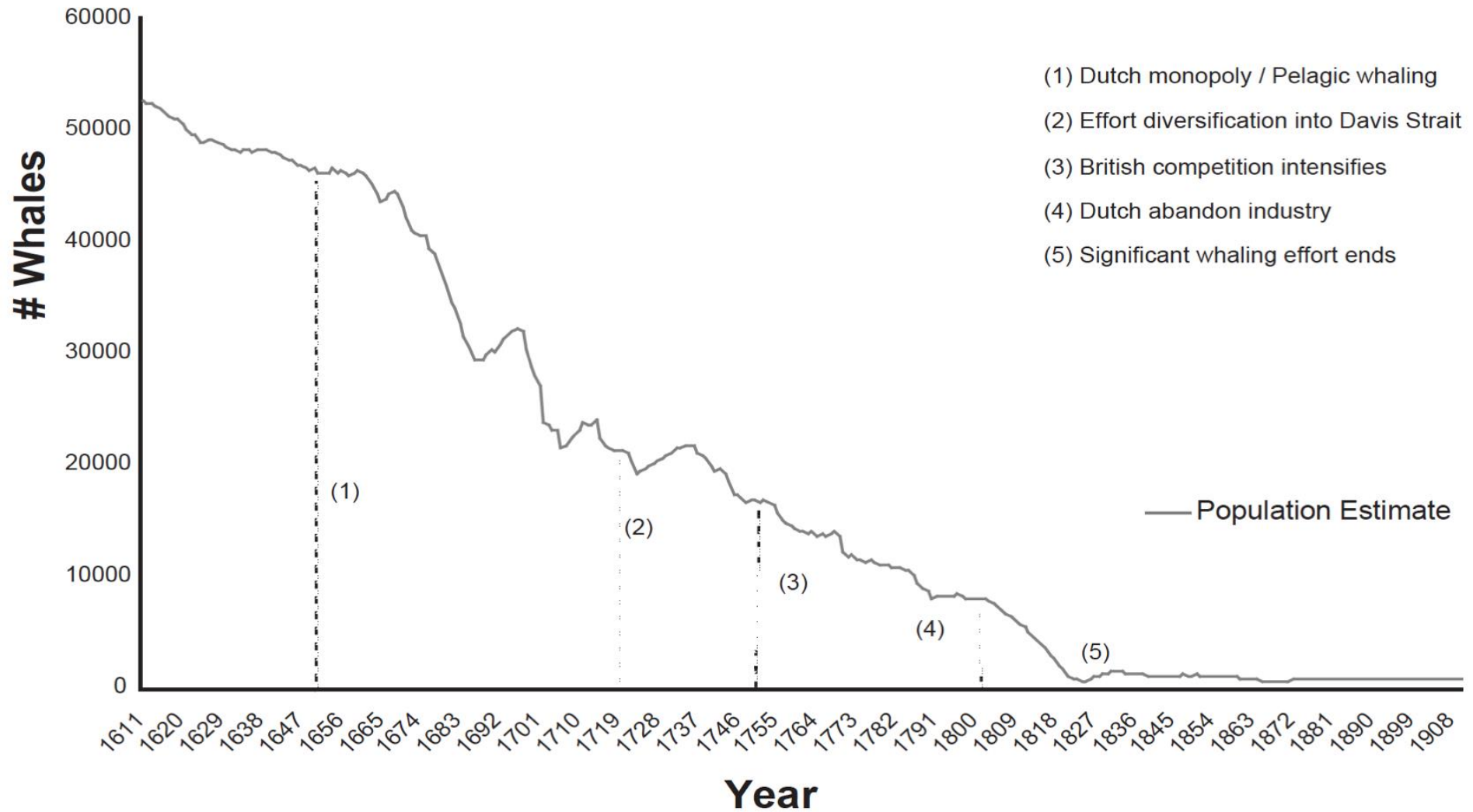




BOWHEAD

- Historical Whaling Records (outside current range)
- Main Summer Distribution
- Current Regular Annual Range
- Mean maximum Ice extent (1981-2010)
- Mean minimum Ice extent (1981-2010)





Ontwikkeling Groenland-Spitsbergen populatie (Allen & Keay 2006)



FEATURE ARTICLE



Spitsbergen's endangered bowhead whales sing through the polar night

Kathleen M. Stafford^{1,*}, Sue E. Moore², Catherine L. Berchok², Øystein Wiig³, Christian Lydersen⁴, Edmond Hansen⁴, Dirk Kalmbach⁵, Kit M. Kovacs⁴

¹Applied Physics Laboratory, University of Washington, Seattle, Washington 98105, USA

²National Oceanic and Atmospheric Administration, Seattle, Washington 98115, USA

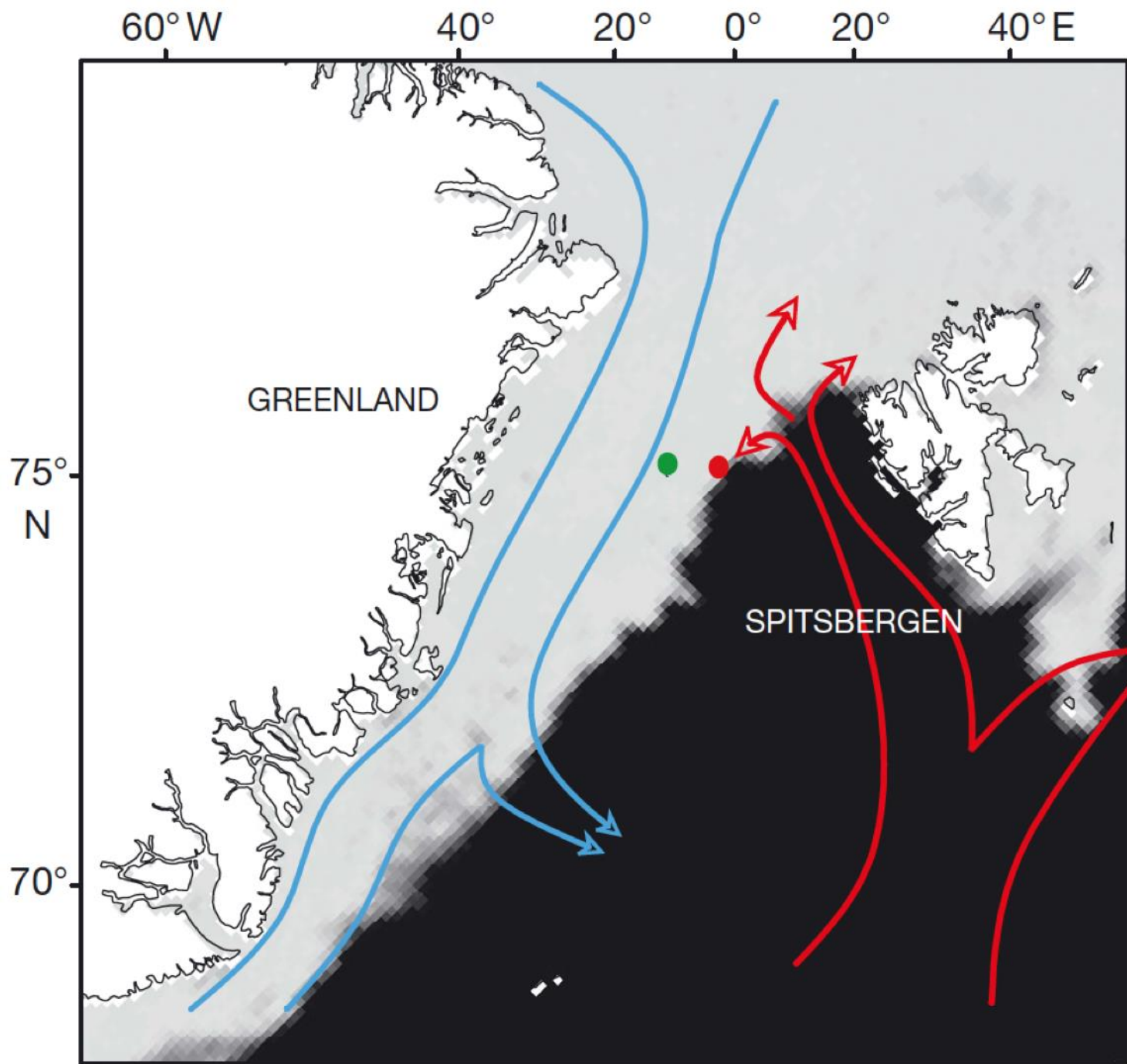
³National Centre for Biosystematics, Natural History Museum, University of Oslo, 0138 Oslo, Norway

⁴Norwegian Polar Institute, 9296 Tromsø, Norway

⁵Alfred Wegener Institute, 27568 Bremerhaven, Germany

ABSTRACT: Bowhead whales *Balaena mysticetus* are long-lived cetaceans, uniquely adapted among the baleen whales to live year-round in the Arctic. All bowhead whale populations were greatly reduced by commercial whaling from the 1600s through the 1800s, with the largest, the Spitsbergen population in the North Atlantic, depleted to the point of extinction. Recent sightings of bowhead whales west of Svalbard precipitated an







The Year of the Ice Whale - *RELAY*

The Year of the Ice Whale, IRL 25-26

Rokiem Wieloryb Grenlandzki, PL 24-25

Året för Grönlands Whale, S 23-24

Das Jahr der Eiswal, D 22-23

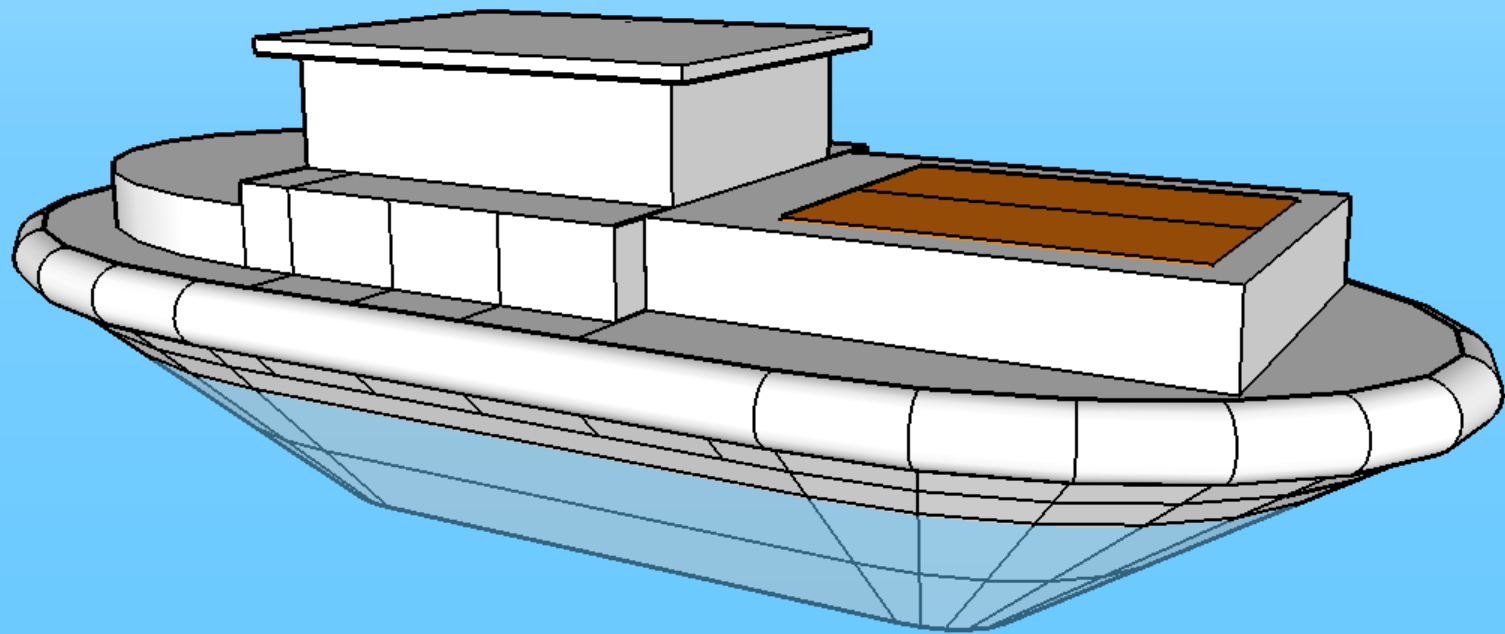
Året for den Grønlandshvalen, DK 21-22

Jaar van de IJswalvis, NL 20-21



----- transfers

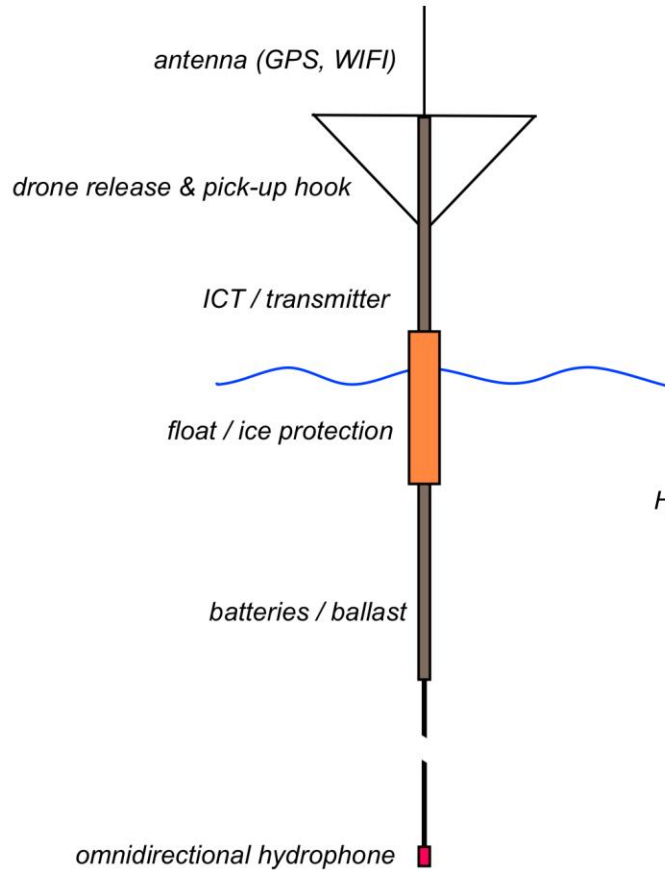
———— drijfs-expeditie



Hydrophone Transmitter Pole

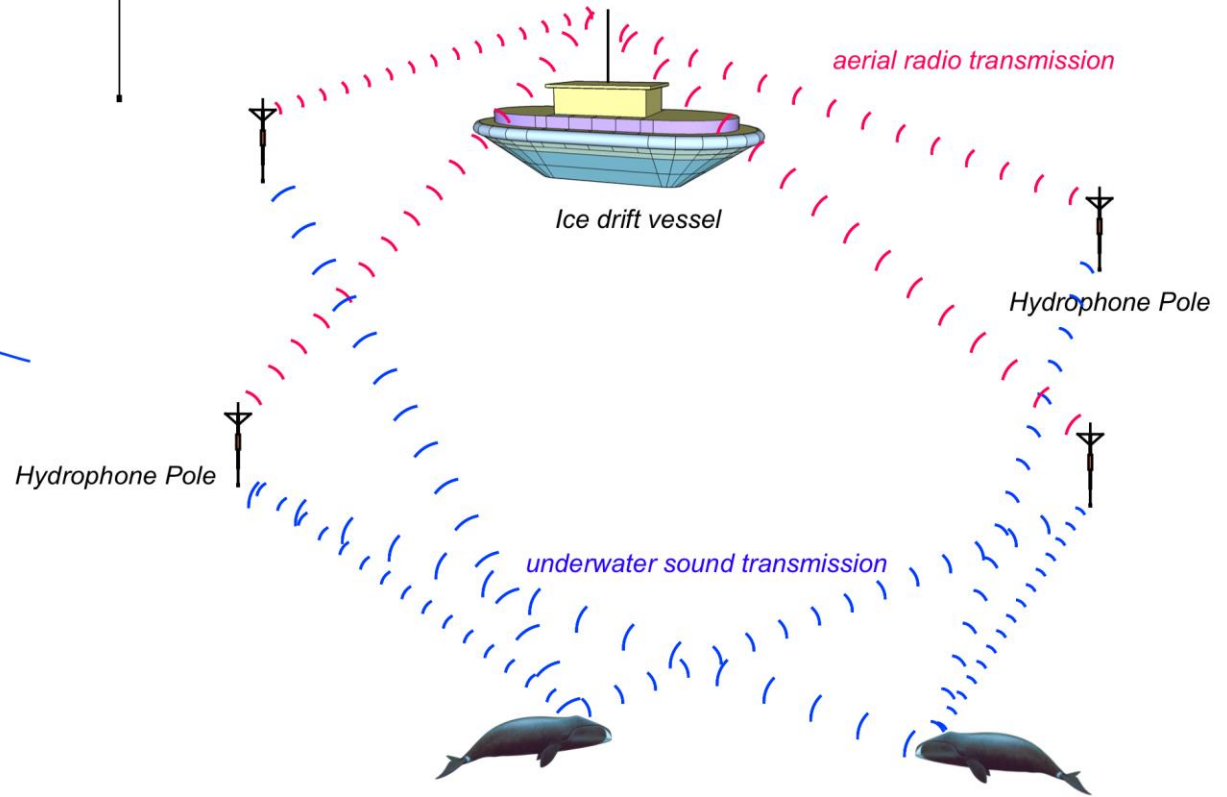
(Sono Buoy)

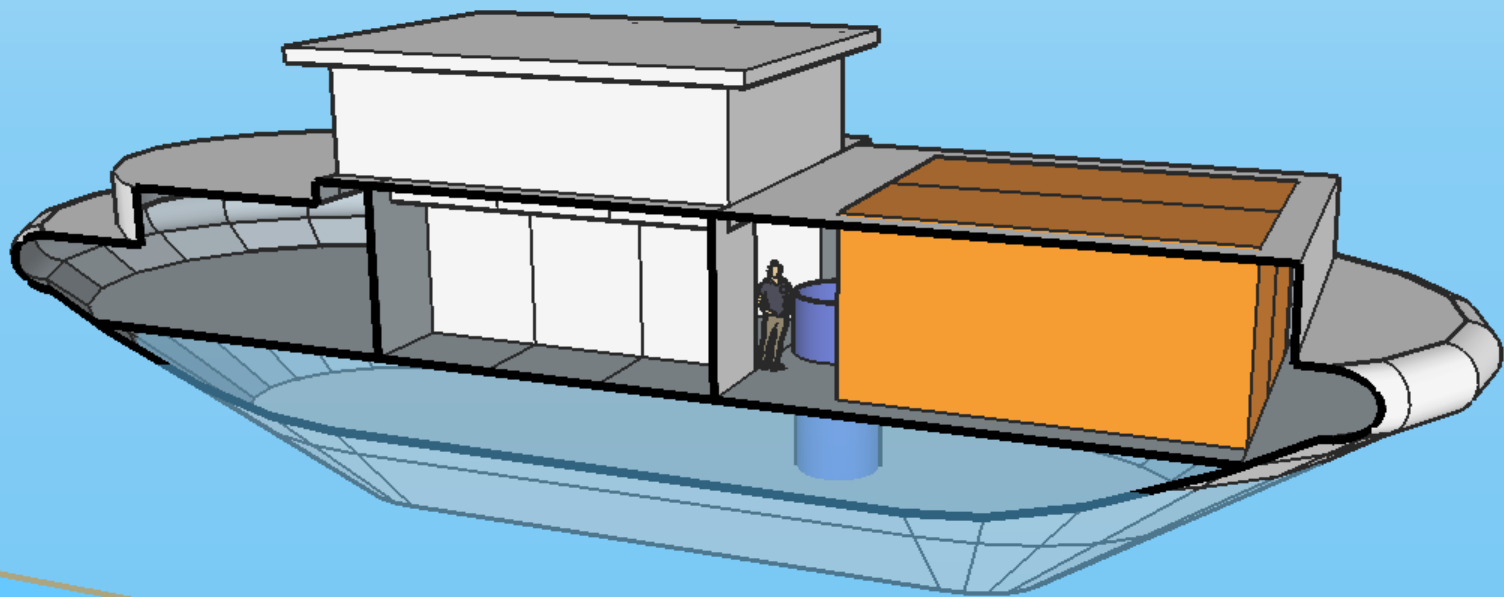
*drone delivered floating pole;
realtime transmitting of hydrophone-audio, GPS,
timescale.*

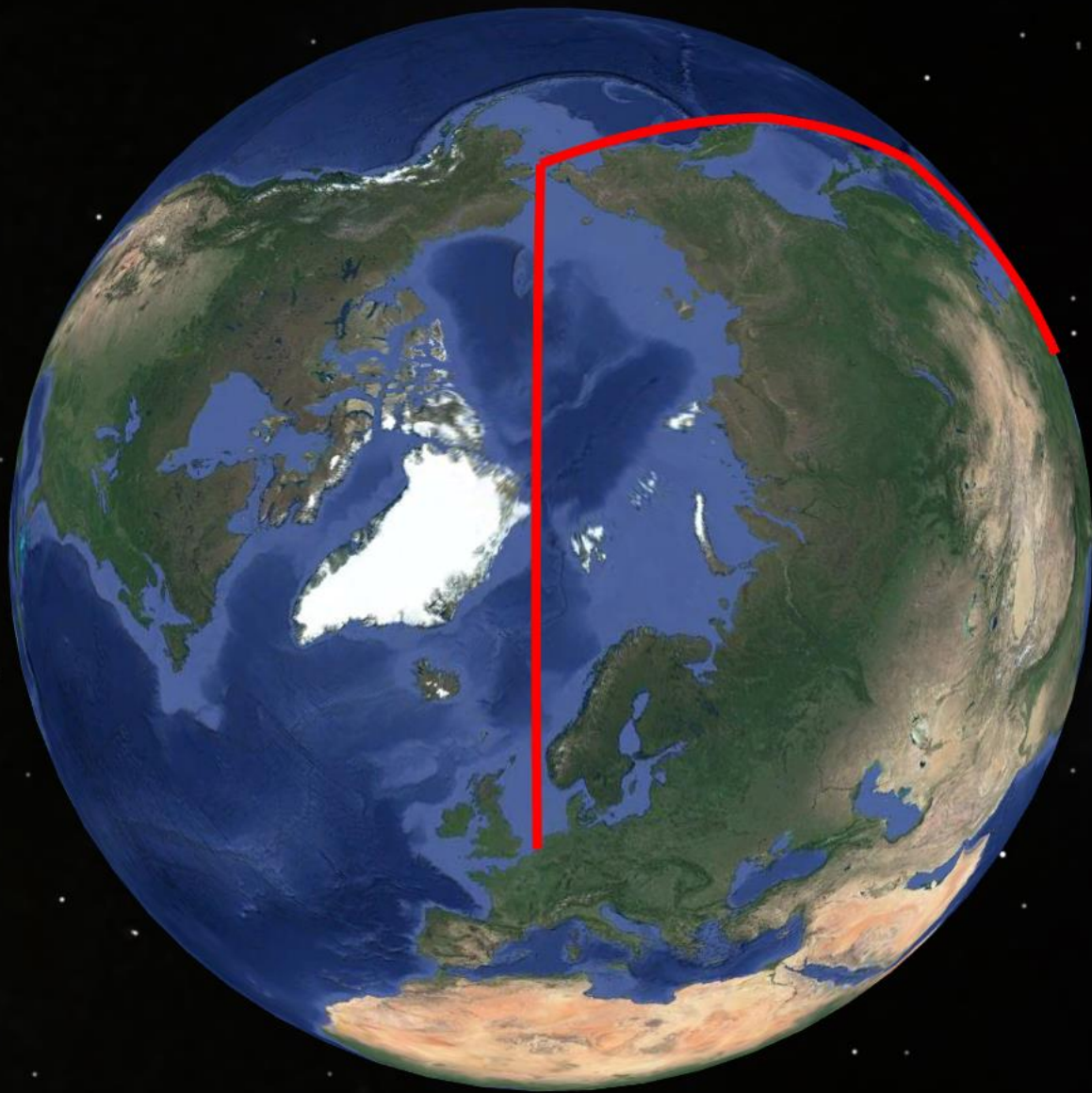


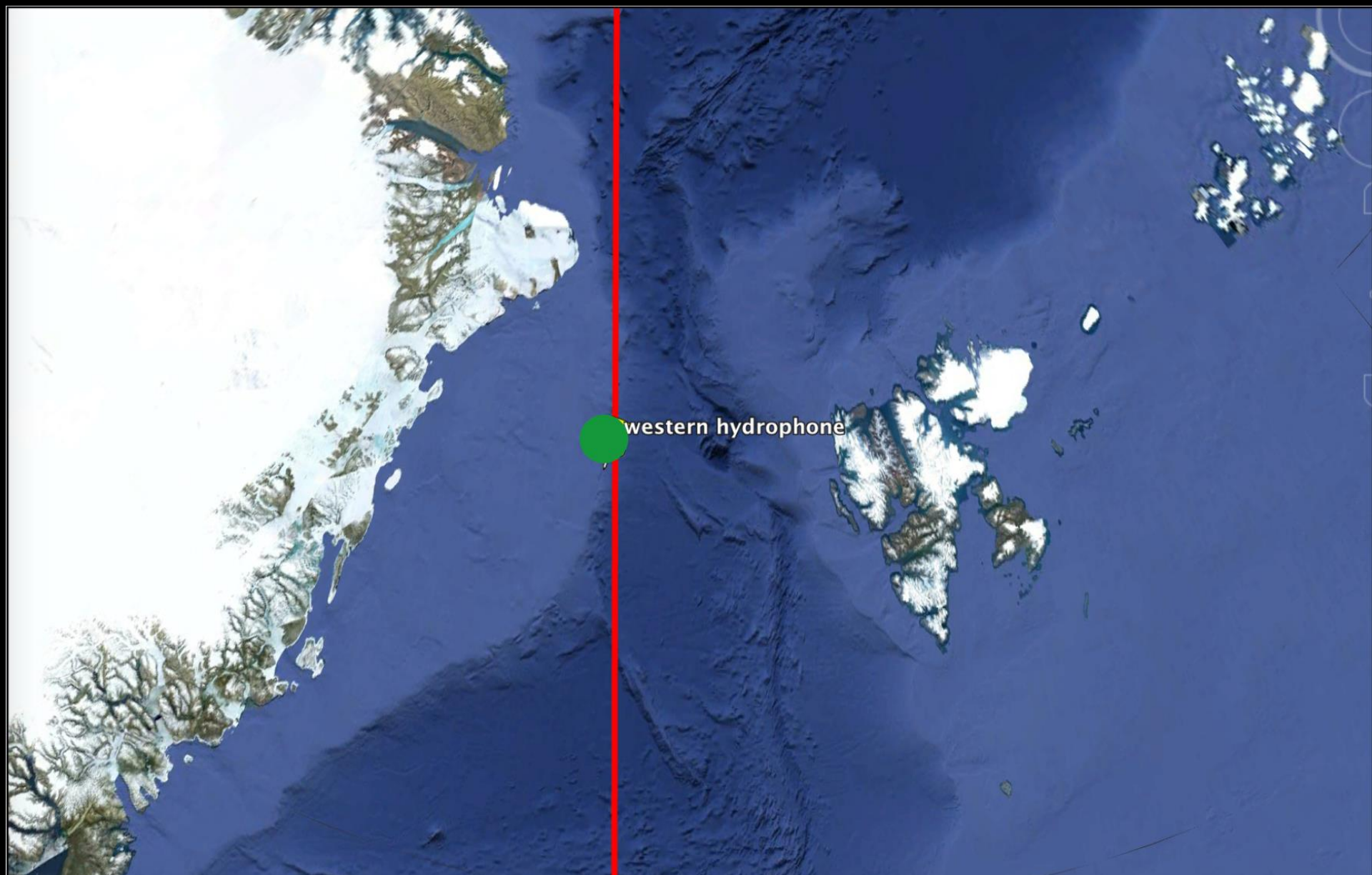
Hydrophone Multi-Channel Recording and Processing

*spectrograms cross correlation and multilateration;
individualisation and positioning;
determining migration/aggregation and song characteristics*









western hydrophone



ICE WHALE FOUNDATION



