



ARCTIC ENTREPRENEURSHIP

- WWF in the Arctic
- NL in the Arctic
- Some food for thought

WWF ARCTIC VISION

A well-managed, biodiverse and resilient Arctic, supporting healthy viable populations of wild species and benefitting the well-being of people in the Arctic and beyond.

Think Big = move from an *exploitation* model to a *custodianship* model – all of us have not much time left

WWF-Netherlands

Gert Polet

25 March 2022



STRATEGY SHAPED AROUND ISSUES & OPPORTUNITIES



Wildlife under pressure

Due to loss of sea-ice habitat due to effects of climate change



World-wide effects

Global sea level rise
Loss of global climate regulation



New economic developments

Greater access due to loss of sea ice
No regulations fit for Arctic circumstances



Indigenous people

Not homogenous aspirations
But large overlap re concerns about environmental & economic changes



Strong arctic nations

Political stable & economically powerfull
Certain level of coordination
All adhere to international rules & regulations



STRATEGIC FOCUS AREAS & 2030 GOALS



Ecosystems & Wildlife

At least 30% of Arctic key marine and coastal habitats are effectively protected, including at least 10% of those under strict protection, through an Arctic Ocean network of priority areas for conservation areas that is embedded in ecosystem-based management of the surrounding seascape.

Populations of Arctic priority species are secure in the wild, benefiting broader biodiversity conservation including the people who depend on them.

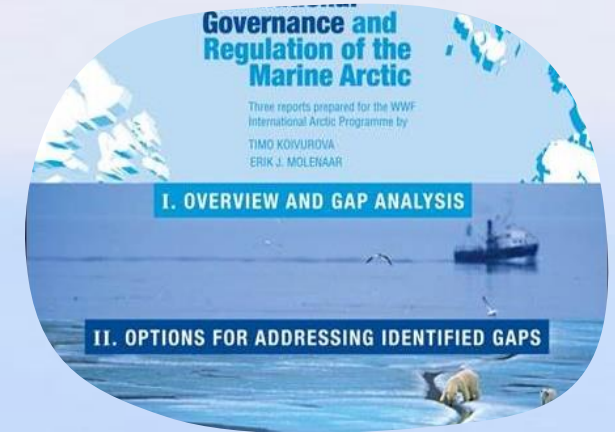


Sustainable Development

Oil and gas production is scaling down in the Arctic; renewable energy serves a significant share of local energy needs.

Shipping in the Arctic moves toward non fossil fuel-based propulsion, follows strict environmental regulations and key species and habitats are protected from the impacts of shipping, including pollution from vessels, underwater noise and oil spills impact. A complete heavy fuel oil (HFO) ban is implemented.

Economic development across the Arctic follows a just transition pathway to a Sustainable Blue Economy.



Good Arctic Governance

Pathways for effective marine governance of the Central Arctic Ocean are defined and supported by all stakeholders.

The Arctic Council ensures effective governance in the Arctic.



30% OF THE ARCTIC BY 2030

Network of *specially managed areas*

- Biodiversity & ecosystem functions as starting point
- Forward looking
- *Not* a blue print but a tool to facilitate dialogue

New Siberian Islands Sanctuary: 66.000 km² (2018)

US Arctic: moratorium off shore oil & gas in 2018

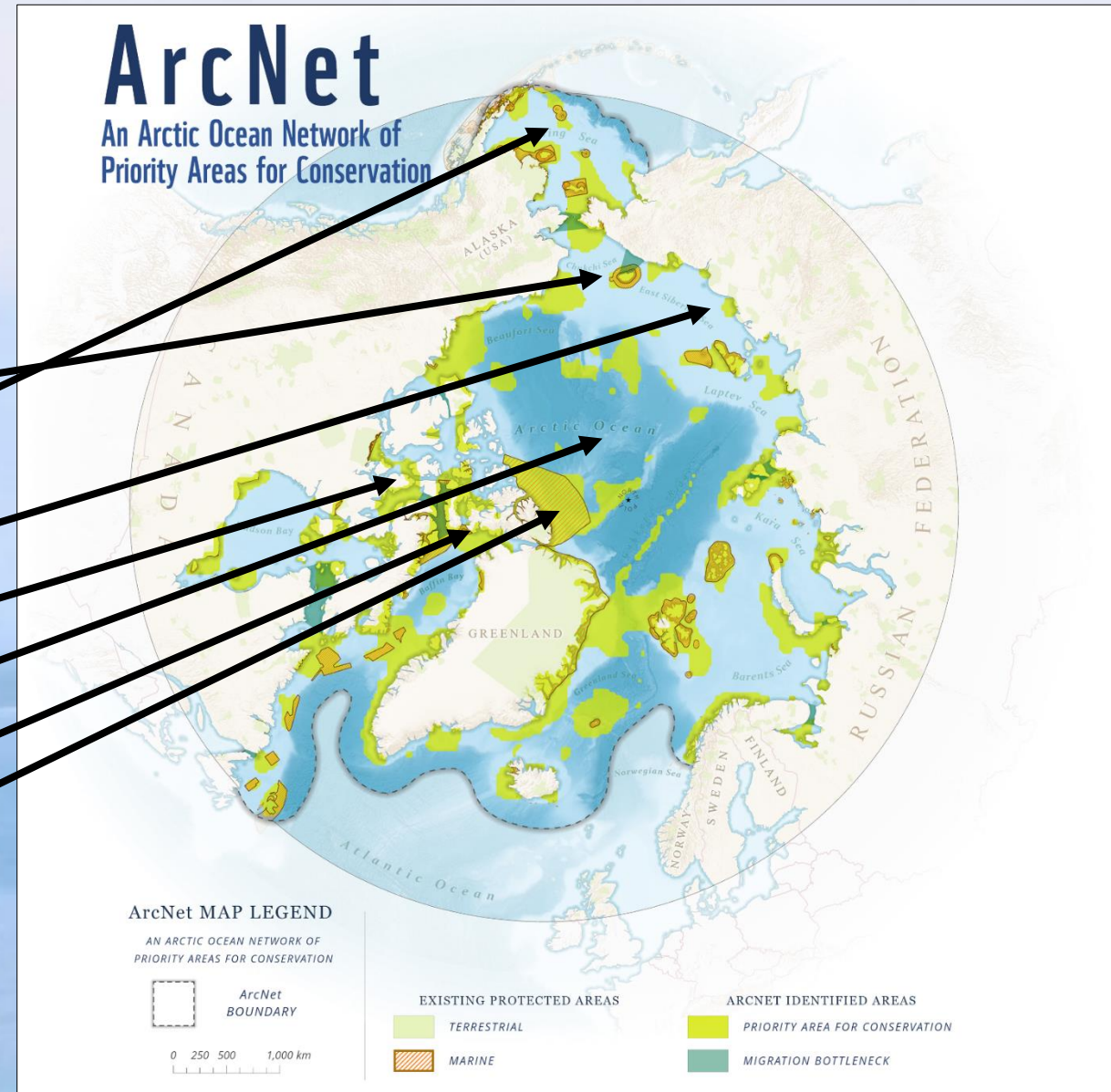
Russian Arctic: ~~moratorium off shore oil & gas~~ (2016)

Canadian Arctic: moratorium off shore oil & gas (2017)

Fisheries Moratorium Arctic Ocean (2017)

Lancaster Sound: 131.000 km² (2016)

Tuvaijuittuq marine managed area:
322.000 km² (2019)





THE DUTCH IN THE ARCTIC





WWF-NL IN THE ARCTIC

Office	Main components
Arctic Programme	Focus on international aspects under a set of 3 main strategies (conservation, economic developments, governance)
Russia Arctic Programme	(M)PA development oil & gas and shipping Polar Bear conflict management
Greenland Programme	Polar Bear conflict management Marine litter
Svalbard Polar Bear monitoring research	Polar Bear monitoring research

Partner contributions:

- WWF-Arctic offices (SE, NO, DK, FI, RU, US, CA)
- WWF-UK & WWF-DE
- Governments (esp DE & SE)
- Private Foundations



Nederlandse Polaire Strategie 2016-2020 Samen voor duurzaam

NL GOV POLAR POLICY

Beantwoording Kamervragen over Nederlandse Polaire Strategie 2021-2025

Minister Blok beantwoordt vragen over de Nederlandse Polaire Strategie 2021-2025.

Download 'Beantwoording Kamervragen over Nederlandse Polaire Strategie 2021-2025'

PDF document | 23 pagina's | 377 kB
Kamerstuk: Kamervragen | 16-02-2021

Dit document is een bijlage bij

Beantwoording antwoorden op Kamervragen over Nederlandse Polaire Strategie 2021-2025

Minister Blok stuurt de antwoorden op vragen over de Nederlandse Polaire Strategie 2021-2025.

Kamerstuk: Kamerbrief | 16-02-2021



NL GOV POSITIONS & B&I





NL Stakes & Expertise in the Arctic

- History
- NL Gov Observer in the **Arctic Council**
- NL Gov signatory to relevant **Treaties & Conventions** (Law of the Sea, Int Maritime Organisation, CBD)
- 1920 Spitsbergen Treaty
- **NL Gov Polar Policy** and EU positions
- **Shell Plc** operations in ~~Alaska, Canada~~, Greenland, ~~Russia~~
- NL shipping, fishing and tourism (limited; but leveraging level playing field)
- Netherlands Institute for the Law of the Sea (Utrecht Uni)
- Marine Litter (Wageningen Uni)
- Glaciology in Greenland (Utrecht Uni)
- Cie MER (Environmental Impact Assessments)
- **Destination Svalbard** speaks to the imagination of many Dutch travellers

WWF-NL Roles in the Arctic

- **Financial support**
- **Influence** NL Gov positions in international conventions (NL Polar Policy, IMO shipping, EU, research agenda)
- Engage International Law & Legislation **expertise**
- Engage Shipping & Underwater noise **expertise**
- Engage Marine Litter **expertise**
- ~~Engage EIA **expertise**~~
- **Influence Business & Industry**



ARCTIC ENTREPRENEURSHIP

Perspective of the World Wildlife Fund re sustainable Arctic entrepreneurship

Rationale

- As global industry increasingly looks to the Arctic for raw materials and new opportunities for economic growth, this will mean **increased pressure on ecosystems while sustainability of these developments in this vulnerable region is doubtful.**
- We have **one decade left** to complete the implementation of the global Sustainable Development Goals.
- However, the people living in the Arctic have few economic opportunities available.
- We need to ensure that this **development is responsible and sustainable**, balancing the need for social and economic development in concert with sustainability and ecosystem-based conservation.
- We need to **pursue strengthening resilience** of the Arctic people and natural environment to pressures often coming from outside the Arctic, including progressing climate change, impact of contaminants and other health risks.



ARCTIC ENTREPRENEURSHIP

Arctic has a global Climate Regulation function without which > billion people globally are vulnerable

Banks do not want to invest because of the enormous risks – its just a bad business proposition to invest

Nature Positive = Climate Positive

Nature First: first *no-go* zones, only than *go* zone

Precautionary Principle: if in doubt- don't

Transparent Chain of Custody is in demand (customers, public) ← the opportunity

Operations - Operational Standards ← requires regulation which is fit for the circumstances of the Arctic

Current energy crisis may push fossil fuel extraction further into the Arctic